

For 73210-9993 Harley Davidson Motorcycles made before 2/25/02

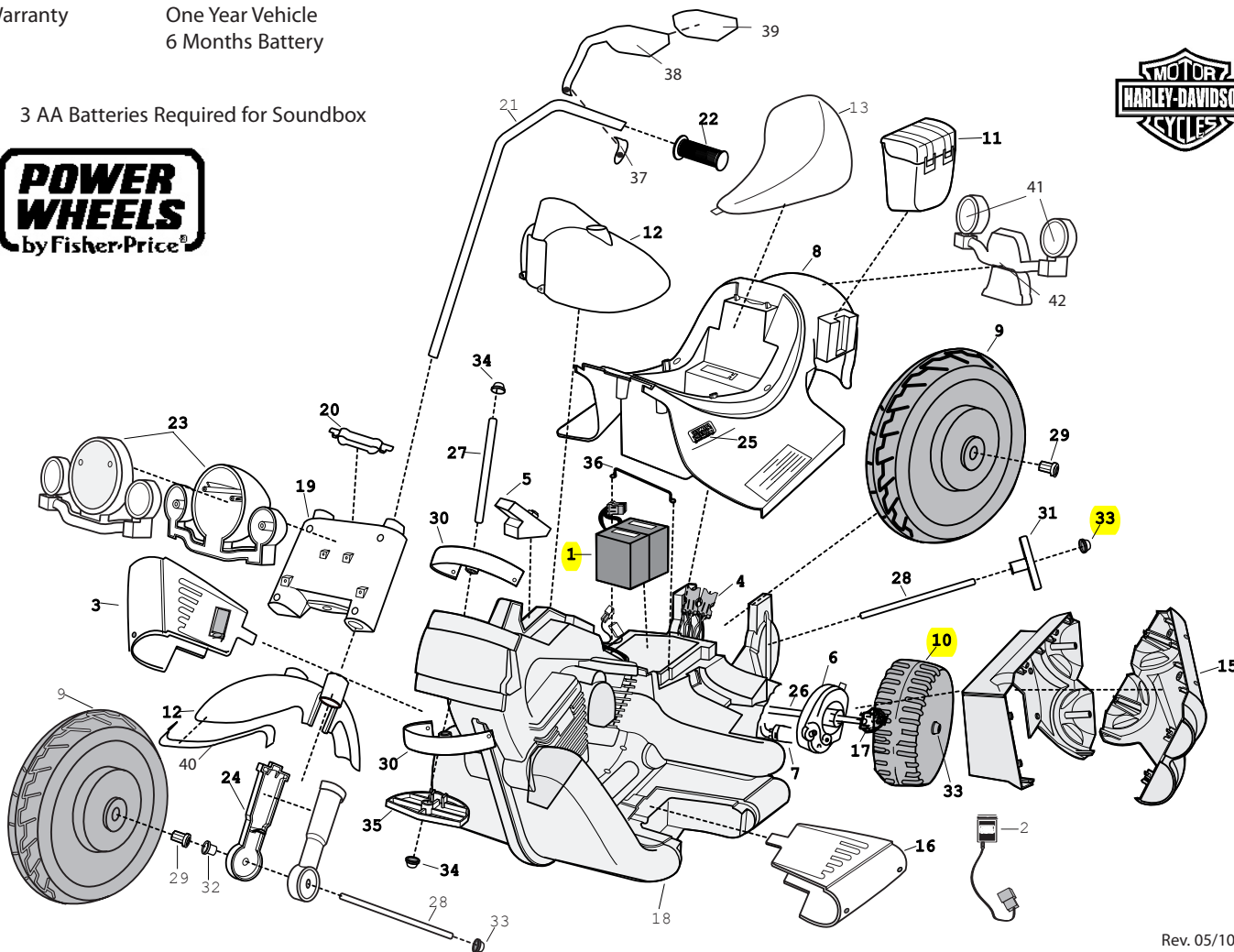
Age Range: 3-7 Yrs.
 Weight Limit: 65 Lbs.
 Surfaces: Grass & Hard
 Speed: 2.5 / 5.0 MPH Forward
 2.5 MPH Reverse
 Colors: Blue Body
 Flame Trim
 Intro: 02-05-01 U.S.
 Suggested Retail: \$199.99
 Box Dimensions: 40" x 20" x 25"
 35 Lbs.
 Warranty: One Year Vehicle
 6 Months Battery

73210-9993

Harley Davidson® Motorcycle Advanced Series Non H.E. 12 Volt



3 AA Batteries Required for Soundbox



Rev. 05/10/06

Item No.	Description	Part No.	Qty.	Item No.	Description	Part No.	Qty.	Item No.	Description	Part No.	Qty.
Working / Electrical Parts											
1	6 Volt Battery	00801-0712	2	21	Handlebar Set (banded)	74290-90291	1	Parts Not Shown			
2	12V Charger	00801-0973	1	22	Handgrip	74290-2399	2	Mirror Housing Right	75209-2459	1	
3	Right Ftbd Assy w/switch	74370-9239	1	23	Headlight Assembly N/A	74370-92891	1	Decal Sheet N/A	73210-0310	1	
4	Wiring Harness Assembly	74290-97991	1	24	Shock Set (banded)	74370-9329	1	Owners Manual	73210-0920	1	
5	Soundbox	74290-9559	1	25	PW Emblem	74460-9069	2	Small Parts Bag(purch parts)	N/A		
6	#7 Motor Gearbox Assm	00968-29012	2	Hardware / Metal Parts							
7	Motor w/Pinion	74290-9539	2	26	Axle (drive wheel)	74290-4509	1	73210-9139	1		
Plastic / Other Parts											
8	Body (N/A)	74370-2109	1	27	Axle (fork)	74290-4529	1	Hardware Bag N/A	73210-9279	1	
9	Large Wheel	74290-2159	2	28	Axle (front/rear wheel)	74290-4519	2	Hardware Bag (sub)	73210-9289	1	
10	Drive Wheel (Small)	74290-2269	2	29	Bushing (hex)	73233-2559	4	Lg Parts Bag(molded)	N/A	73210-9039	1
11	Saddle Bag	74290-2129	2	30	Bushing (steering)	74370-2359	2	Gearbox W/Out Motor 00968-2801 1			
12	Front Fend & Gas Tank	73210-213A	1	31	Bushing (axle/silver)	74370-2379	2	Control Switch	00801-0873	2	
13	Seat	74290-2309	1	32	Bushing 7/16 (round)	74550-2689	2	3/4 Plastite Screw	0912-8001	61	
15	Exhaust Set inner and out (banded)	3800-6698	1	33	.437 Cap Nut	0801-0226	6	Adhesive clip	0801-0313	1	
16	Footboard / Left	74370-2249	1	34	.354 Cap Nut	0801-0604	3	Screw 8 x 1/2		5	
17	Driver	73233-2239	2	35	Steering Stop	74370-2369	1	Footswitch 00801-0933 1			
18	Frame set (L/& R) N/A	74370-9219	1	36	Battery Retainer	74290-4419	1				
19	Front Fork	75201-2349	1	37	Mirror Clamp	75209-2429	2				
20	Fork Cover/clamp	74370-2389	1	38	Mirror Housing Left	75209-2449	1				
				39	Mirror Lens	75209-2469	2				
				40	Fender tip	75210-2419	1				
				41	Tail light cover	75210-2479	2				
				42	Tail light assm	75210-2299	1				

Bold and Underlined parts are to be purchased and installed by Service Centers only. These items may not be sold directly to consumers by Service Centers or Fisher-Price.

N/A = Not Available